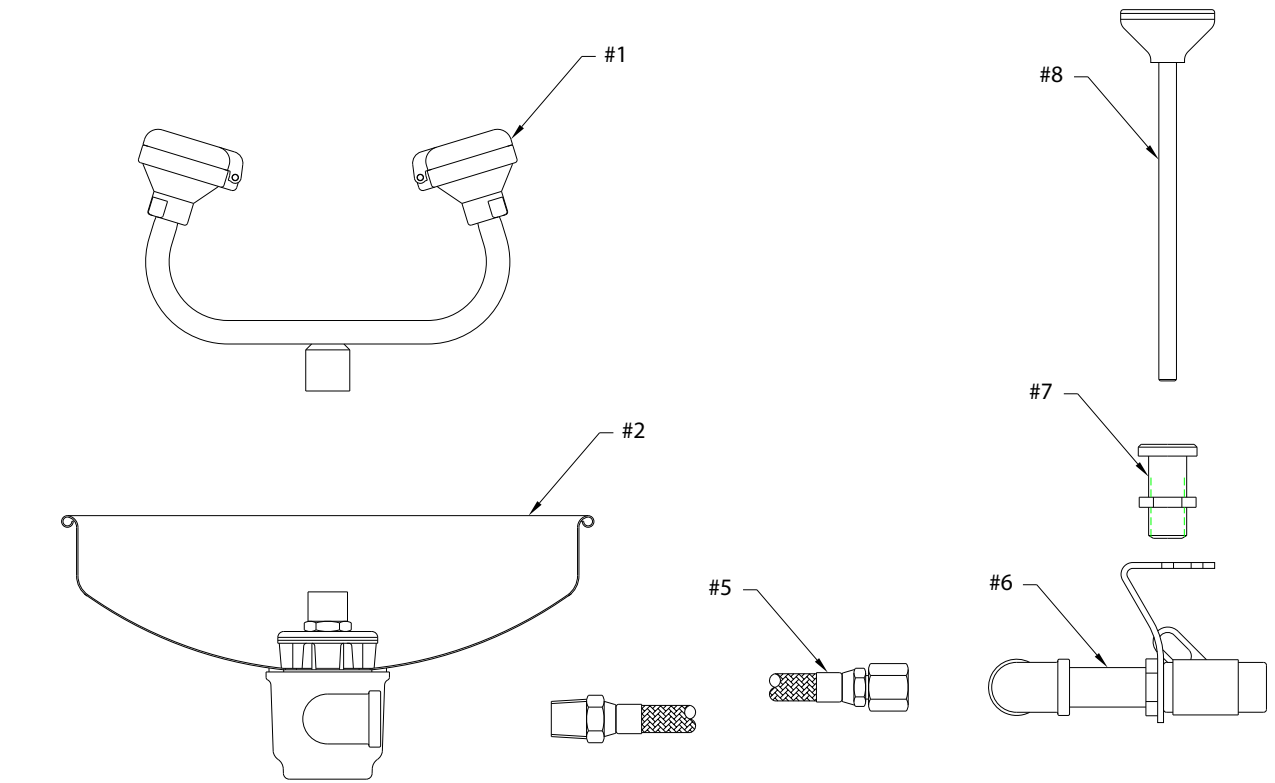


ASSEMBLY AND INSTALLATION

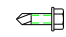





1. Determine mounting location for Recessed Bowl Eyewash/Facewash.
2. Using enclosed mounting template, drawing number D0716, locate optimum location for the recessed bowl eyewash. See the template sheet for minimum mounting distances. (Note: This assembly can be used in counter tops with a thickness of $\frac{3}{4}$ " to $1\frac{1}{4}$ ".)
3. Cut the $10\frac{3}{4}$ " diameter hole in the counter for the bowl assembly. Position the bowl assembly in the hole.
4. Place the tank nipple with pipe nut (Item #4) through the hole in the bowl mounting bracket. See page 3.
5. From underneath the counter, attach the pipe nipple with bracket and nut to the base of the bowl assembly. Tighten the nipple to correct thread engagement.
6. Attach the bowl mounting bracket to the counter using four (4) $\frac{1}{4}$ " x $\frac{3}{4}$ " hex head self-tapping screws.
7. Raise the bowl assembly from the counter and apply a silicon sealant to the top edge of the hole cut in the counter. Tighten the $1\frac{1}{4}$ " pipe nut against the bowl mounting bracket to secure the bowl assembly to the counter. Wipe off any excess silicon sealant.
8. Attach the flexible stainless steel tubing to the bowl assembly.
9. Using the template, determine the location for the push rod actuator. Drill the $7/8$ " hole in the counter.
10. Remove the nut from the push rod stem guide (Item #7) and place the stem guide in the hole. From underneath the counter, place the valve assembly (Item #6) over the stem guide protruding from the counter and attach the nut to the stem guide.
11. Position the valve assembly so that the ball valve is facing the front of the counter and the elbow is in line with the bowl assembly. See the template for correct orientation of the valve assembly.
12. Secure the valve assembly to the counter with four (4) $\frac{1}{4}$ " x $\frac{3}{4}$ " hex head self-tapping screws. Tighten the nut on the stem guide to secure it to the counter.
13. Place the push rod assembly through the stem guide. Attach the push rod assembly to the actuator arm on the ball valve using one (1) #10-32 x 1" pan head screw, two (2) #10 fender washers, one (1) bushing, one (1) #10 flat washer and one (1) #10 lock nut. See diagram #1 on page 3 for orientation of the hardware to attach the push rod to the ball valve assembly.
14. Attach the braided tubing to the valve assembly.
15. Attach the eyewash/facewash assembly (Item #1) to the bowl assembly and position it so that it is parallel to the front of the counter.
16. Attach a cut-off of the supply line prior to it connecting to the unit to facilitate repair of the unit.

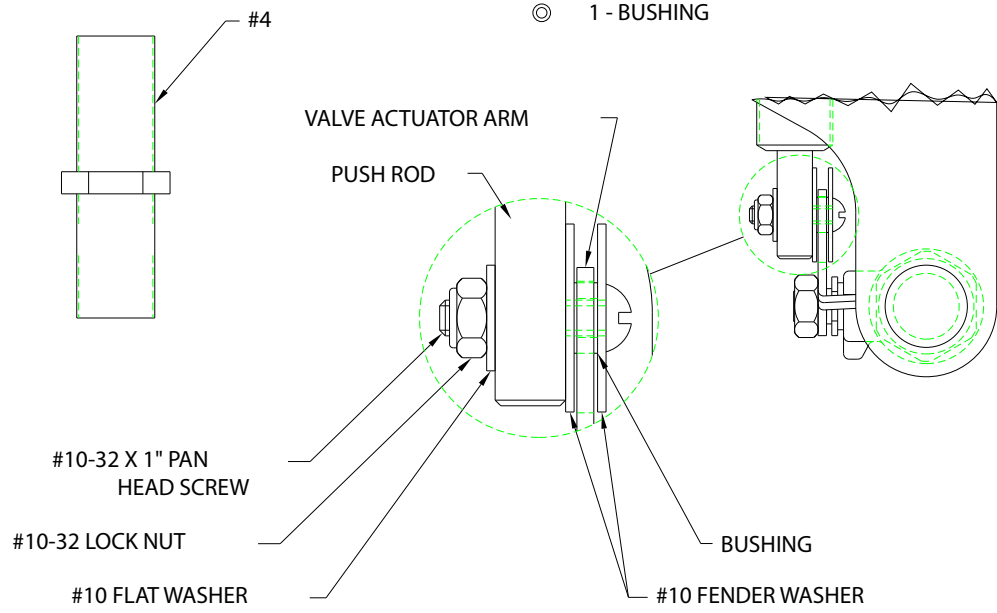
PARTS LIST

- | | |
|--|---|
| 1 – Eyewash/Facewash Assembly (Item #1) | 1 – Valve Assembly (Item #6) |
| 1 – Bowl Assembly (Item #2) | 1 – Push Rod Stem Guide W/Nut (Item #7) |
| 1 – Bowl Mounting Bracket (Item #3) | 1 – Push Rod Assembly (Item #8) |
| 1 – Tank Nipple w/ $1\frac{1}{4}$ " Pipe Nut (Item #4) | 1 – Hardware Package |
| 1 – Flexible Stainless Steel Braided Tubing (Item #5) | |



HARDWARE PACKAGE CONTAINS:

-  8 - 1/4" X 3/4" HEX HEAD SELF-TAPPING SCREW
-  1 - #10-32 X 1" PAN HEAD SCREW
-  1 - #10-32 LOCK NUT
-  1 - #10 FLAT WASHER
-  2 - #10 FENDER WASHER
-  1 - BUSHING



PROPOSITION 65

WARNING: This product can expose you to BPA, which is known to the State of California to cause birth defects or other reproductive harm. For more information go to www.P65Warnings.ca.gov.

WARRANTY STATEMENT

ENCON HEREBY DISCLAIMS ALL WARRANTIES EXPRESSED OR IMPLIED INCLUDING BUT NOT LIMITED TO WARRANTIES OF MERCHANTABILITY, FITNESS FOR A PARTICULAR PURPOSE, AND NON-INFRINGEMENT OF THIRD-PARTY RIGHTS, EXCEPT AS HEREINAFTER PROVIDED.

Encon Safety Products warrants that for one year from the date of purchase of any Encon products, the product will be free of defects in materials and workmanship if properly used and cared for or cleaned under normal conditions in accordance with Encon's use and care instructions and properly installed, if applicable, in accordance with Encon's installation instructions. With respect to the product, Encon's only obligation and purchaser's exclusive remedy under this warranty is to repair or replace such product; provided that:

1. Encon is notified of the defect within one year of shipment, and
2. the product is determined by Encon to be defective.

Encon requires proof of original ownership as proof of warranty coverage, and Encon must receive any claim under this Limited Warranty within one year of purchase of the product.

NOTWITHSTANDING ANYTHING TO THE CONTRARY CONTAINED HEREIN, ENCON SHALL NOT BE LIABLE FOR LOSS, DAMAGE, OR EXPENSE ARISING DIRECTLY OR INDIRECTLY AS A CONSEQUENCE OF USE OF THE EQUIPMENT WITH OTHER PRODUCTS OR FROM ANY OTHER CAUSE, INCLUDING ANY CONSEQUENTIAL, INCIDENTAL, SPECIAL OR EXEMPLARY DAMAGES, EXCEPT FOR ENCON'S OBLIGATION TO REPAIR OR REPLACE DEFECTIVE PRODUCTS AS EXPRESSLY PROVIDED IN THIS STATEMENT.

Replacement parts purchased from Encon are warranted for one year following the shipment of such replacement part, or until the expiration of the warranty period for the product, whichever is less. No warranty is given in connection with products that are altered without Encon's expressed written consent. The same warranty limitations and the obligations of Encon as set out herein above shall apply to replacement parts.

Encon's total liability arising out of this warranty (including, but not limited to, warranty claims) regardless of forum and regardless of whether such action or claim is based on tort, contract or otherwise will not exceed the total purchase price of the product.



6825 W. Sam Houston Pkwy. N
Houston, TX 77041
1-800-AT-ENCON / 1-800-283-6266
customerservice@enconsafety.com
<http://www.enconsafety.com>